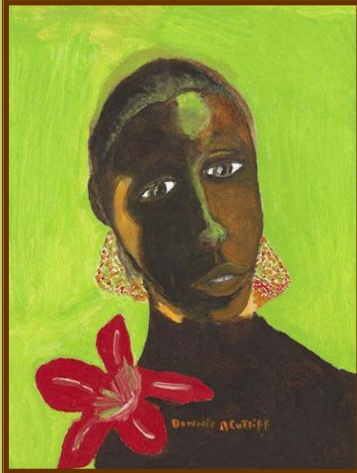


# Supports to Work



Many people with disabilities want to work and believe that work is an important part of life. Some people with disabilities need help to be able to work. This help can come from

devices, tools, aids or from another person.

## Assistive Technology

Assistive technology, also called AT, is a device, tool, or aid that helps you live or work. AT plays an important part in helping people with disabilities achieve their best and participate fully in the community. Some examples of AT are:

- Braille 'n Speak Note Taker for people with visual impairments
- Three-wheeled motorized scooters for people with mobility impairments
- Amplified telephone receivers, flashing lights on phones and alarms for people who are deaf or have hearing impairments
- Medication reminders for people with cognitive or psychiatric disabilities.

Medicaid, Medicare or Louisiana Rehabilitation Services (LRS) may be able to help you with AT costs if you qualify for their services. If you get services from any other agency or organization, you should ask if they can help you with AT.

Under the Americans with Disabilities Act (ADA) your employer may be required to help with the cost of technology that allows you to be successful on the job. Read the **Knowing Your Rights** tip sheet to learn more about the ADA.

### TIP

Certain Assistive Technology, such as vehicle modifications, wheelchairs, lifts, and prosthetic devices **may** be exempt from state sales tax. Ask your AT supplier for more information.

You can get additional information about assistive technology devices, services and funding from the Louisiana Assistive Technology Access Network (LATAN). LATAN is the state program that provides services such as:

- Device demonstrations for people who want to try items before buying
- The AT Marketplace, which provides access to previously-owned devices available at no or low cost
- Computer ReUse program
- AT, including durable medical equipment, available in emergencies
- Low interest financial loans for the purchase of AT
- Training and technical assistance
- Individual information, assistance and referrals

For more information, contact LATAN at 1-800-270-6185 or [www.latan.org](http://www.latan.org).

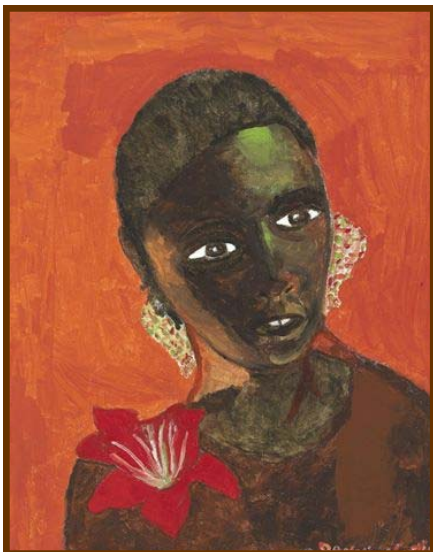


## Personal Assistance

Personal assistance provides help with daily living tasks like eating, bathing, dressing, grooming, transferring, walking, toileting and other personal needs.

If you get Medicaid and need this kind of help, contact Louisiana Options in Long Term Care at 1-877-456-1146 (TDD 1-877-544-9544).

If you are eligible for services through Louisiana Rehabilitation Services (LRS) and are in need of a Personal Care Attendant (PCA), you may get help from LRS. This service can only be provided while you are participating in a plan of vocational rehabilitation services. For more information, contact Louisiana Rehabilitation Services at 1-800-737-2958 or visit [www.dss.louisiana.gov](http://www.dss.louisiana.gov).



## AT Resources

### Louisiana Medicaid

1-888-544-7996

[www.dhh.la.gov](http://www.dhh.la.gov)

### Medicare

1-800-633-4227

[www.medicare.gov](http://www.medicare.gov)

### Job Accommodation Network

[www.jan.wvu.edu](http://www.jan.wvu.edu)

### Disabilityinfo.gov

[www.disabilityinfo.gov](http://www.disabilityinfo.gov)

### Assistivetech.net

[www.assistivetech.net](http://www.assistivetech.net)

## Personal Assistance Resources

### DHH Office of Aging and Adult Services

1-866-758-5035

[www.oaas.dhh.louisiana.gov](http://www.oaas.dhh.louisiana.gov)

The artwork was created by Donnie Cutliff for Red River Artists with Disabilities project. Learn more at [www.disabledartists.org](http://www.disabledartists.org).

This document and others like it can be found at [www.LaMPP.org](http://www.LaMPP.org). This document is for informational purposes and is not a substitute for professional advice. It was developed by Louisiana's Medicaid Infrastructure Grant project with funds from the Center on Medicare and Medicaid Services Medicaid Infrastructure Grant CFDA 93.768. This public document was published at a total cost of \$1,527.84. Fifteen thousand (15,000) copies of this public document were published in this first printing at a cost of \$1,527.84. The total cost of all printings of this document including reprints is \$1,527.84. This document was published by Office of State Printing P O Box 94095 Baton Rouge, LA 70804-9095 to provide information about working for people with disabilities under special exception by the Division of Administration. This material was printed according to standards for printing by State agencies established pursuant to R.S. 43:31.